

2022 FORD

F-650/F-750

PRO LOADER® | STRAIGHT FRAME | TRACTOR



BUILT FOR EXTREME DUTY.

Growing your business takes hard work. Our Built Ford Tough® F-650/F-750 family of rugged medium-duty trucks will ready you for any challenge. Choose between a 7.3L V8 gas engine or a 6.7L Power Stroke® V8 Turbo Diesel to supply your workhorses with an abundance of raw power. Smart standard and available driver-assist technology¹ (DAT) allows your fleet to be equipped with innovative features that can help avoid potential incidents – as well as the costly downtime that goes with them. Our trucks are assembled – right here in America² – with the capability you demand, as well as the flexibility to meet your changing business needs. So haul it. Pull it. Fill it. No matter the challenge, the 2022 Ford medium-duty truck lineup is rock solid. Ready for action. And backed by Ford.



POWERED BY FORD

ASSEMBLED IN AMERICA²

**TESTED TOUGH: THOUSANDS OF MILES
SIMULATING EXTREME CONDITIONS**

F-750 DIESEL SUPERCAB™ Oxford White. **F-750 DIESEL REGULAR CAB.** Agate Black Metallic.
Both shown with available and aftermarket upfit equipment.



PLENTIFUL POWER

Get ready for a soon-to-be legend in the world of work. The 7.3L gas V8, a dedicated truck engine, is engineered for robust power and iron-clad durability. 3rd-generation upgrades to our proven 6.7L Power Stroke V8 Turbo Diesel help deliver high torque output.

ROBUST ASSISTANCE

Available Driver Assist Technology (DAT) Packages add the following features to air and hydraulic brake models: Pre-Collision Assist with Automatic Emergency Braking; Lane Departure Warning; and Auto High Beams. Trucks with air brakes also include Adaptive Cruise Control.

DIESEL PLUS AIR POWER

Diesel-powered trucks offer an available onboard air system with an engine-mounted air compressor. The compressor provides the capability to power the available air brakes, and additional available features like rear air suspension, air ride seats and more.

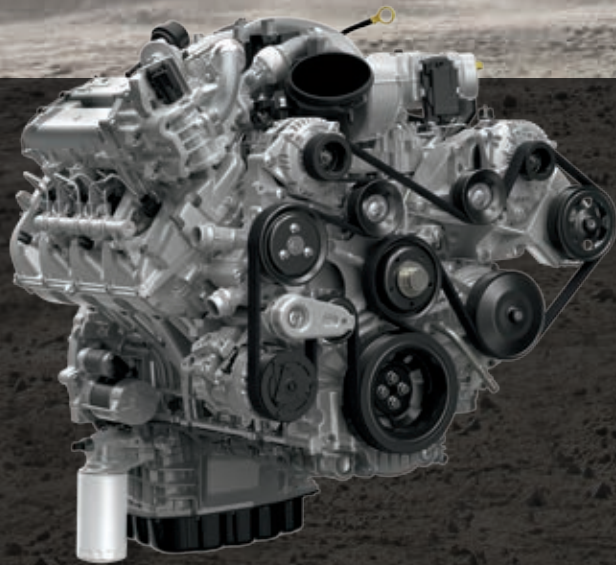


¹ Driver-assist features are supplemental and do not replace the driver's attention, judgment and need to control the vehicle. It does not replace safe driving. See owner's manual for details and limitations. ² Assembled in the USA with domestic and foreign parts.

Vehicle imagery throughout this brochure may be computer-generated and may include available and aftermarket upfit equipment.

POWER UP WITH AUTHORITY.

These trucks work hard. So it's critically important that each powertrain work seamlessly with all chassis components and vehicle calibrations. They will with 2022 F-650/F-750 trucks, as both available engines and the TorqShift® HD 6-speed automatic transmission were designed and built by Ford. In fact, Ford is the only Class 6-7 truck manufacturer to build its own powertrains and offer you the choice of gasoline or diesel power.



6.7L POWER STROKE® V8 TURBO DIESEL 330 MAX. HORSEPOWER | 750 LB.-FT. MAX. TORQUE

While continuing to offer 3 sets of ratings so you can align engine power to your specific needs, our proven Power Stroke diesel features a 36,000-psi fuel injection system to help it optimize combustion and provide excellent throttle response. In this high-pressure environment, forged-steel pistons provide high firing-pressure capability and reduced friction for durability. A turbocharger with fully electronic vane actuator improves cold-weather performance. Finally, its air-induction system helps keep things cool. A trait the 6.7L Power Stroke V8 Turbo Diesel knows all too well – staying cool under extreme pressure.

AVAILABLE HORSEPOWER

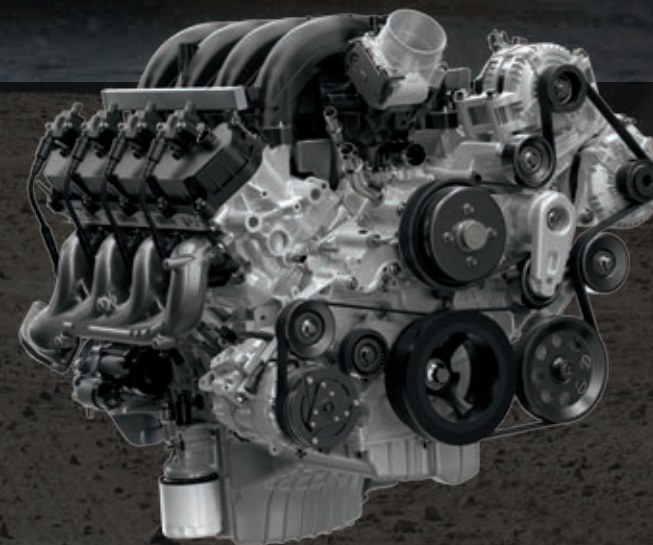
- 270 @ 2,400 rpm
- 300 @ 2,500 rpm
- 330 @ 2,600 rpm

AVAILABLE TORQUE

- 700 lb.-ft. @ 1,500 rpm
- 725 lb.-ft. @ 1,500 rpm
- 750 lb.-ft. @ 1,500 rpm

7.3L 2-VALVE V8 GAS 350 MAX. HORSEPOWER | 468 LB.-FT. MAX. TORQUE

Built from the ground up as a dedicated truck engine, the 7.3L V8 is engineered for iron-clad durability. In Built Ford Tough® tradition, its stout design features: cast-iron engine block construction; a forged-steel crankshaft; carbon-nitrided needle bearings in the valvetrain; robust pistons and ring packs with anti-wear coatings; piston cooling jets; and a variable-displacement oil pump located in the pan. The pump ensures proper engine lubrication in cold-weather starts and, over time, even accommodates engine-wear changes to help maintain optimum performance. And that's what it's all about in harsh environments where these trucks may not leave for months. Tough lives here.

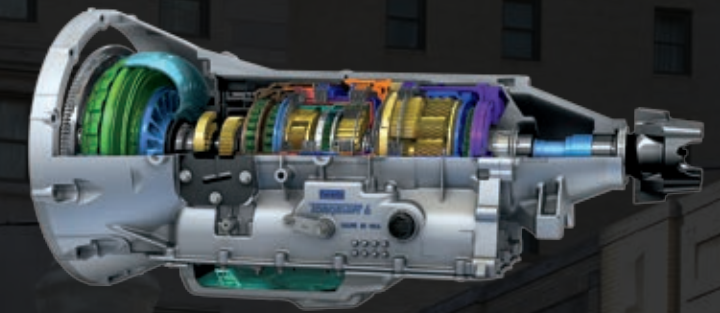


F-750 DIESEL SUPERCAB™ Oxford White. Available and aftermarket upfit equipment.

Horsepower and torque are independent attributes and may not be achieved simultaneously. For additional information, see your Ford Dealer.

DEALER ePROCESS

GEAR DOWN WITH CONFIDENCE.



TORQSHIFT® HD 6-SPEED AUTOMATIC TRANSMISSION

This beast is our proven standard – and versatile enough to be paired with both the 6.7L Power Stroke® V8 Turbo Diesel and the 7.3L V8 gas engine. Smooth, efficient performance comes courtesy of a multi-segment friction clutch design that reduces power loss while maximizing oil flow and transmission productivity. The 3-plate, 2-stage torque converter is designed to handle the substantial horsepower and torque forces it will encounter in medium-duty truck work.

The torque converter's low-speed lockup capability (down to 900 rpm) helps both engines work efficiently at low rpm. Sinter-brazed pinion carriers help the transmission manage the extreme low-end torque of the diesel engine. Robust gearsets are fortified by extra pinion gears for our medium-duty application, and a high-efficiency fluid filter gives this dependable workhorse a fluid change interval of 150,000 miles.



AVAILABLE LIVE-DRIVE PTO PROVISION

Directly linked to the engine crankshaft, our available power takeoff (PTO) provision can power PTO-driven accessories like hydraulic dump bodies, sprayers and plows, or shaft-driven compressors and generators, whether the truck is moving or not. Mobile mode is designed to operate in all gears and at all vehicle speeds. The PTO provision offers a gasoline torque rating of up to 125 lb.-ft. and a diesel torque rating of up to 200 lb.-ft. in mobile operation. Stationary Elevated Idle Control (SEIC) mode increases the PTO provision's gasoline torque rating up to 250 lb.-ft. and its diesel torque rating up to 300 lb.-ft. while parked. On the diesel, you also get split-shaft capability to power multiple auxiliary devices.

F-650 PRO LOADER[®]

GASOLINE / DIESEL



AVAILABLE AMBULANCE PREP PACKAGE | STANDARD TRACTION CONTROL
F-650 DIESEL PRO LOADER SUPERCAB. Race Red. Available and aftermarket upfit equipment.

F-650/F-750 STRAIGHT FRAME

GASOLINE / DIESEL

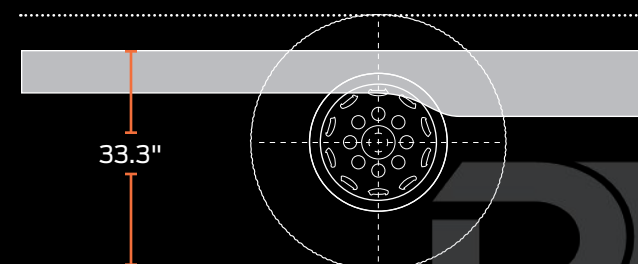


STANDARD AUTOMATIC HEADLAMPS | AVAILABLE BEVERAGE DELIVERY PACKAGE
F-750 GAS REGULAR CAB. Blue Jeans Metallic. Available and aftermarket upfit equipment.

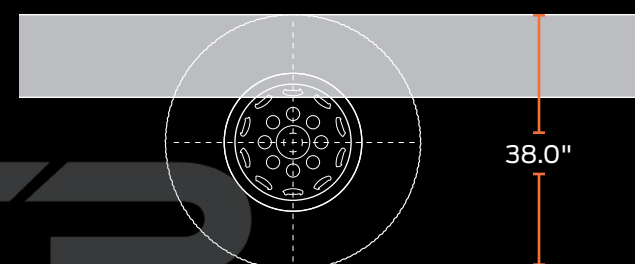
Thanks to the relatively low ground-to-top-of-frame height on its kick-up frame, F-650 Pro Loader is well-suited for ambulance and emergency service applications that require a lower and flat load floor with no interior encroachment. Serviceable and non-serviceable sections of the rugged 9" frame are joined with Huckbolt[®] fasteners for durability. And all Pro Loader models can be equipped with available electronic stability control.¹ Pro Loader is available in Regular Cab, SuperCab[™] and Crew Cab. Crew Cabs feature 76° rear-door openings to help make quick work of loading bulky gear or extra passengers.

GVWRs: 22,000–26,000 lbs.²
 GCWRs: 37,000 lbs. (Gas) / 50,000 lbs. (Diesel)
 Rear axle ratings up to 17,500 lbs.²

GROUND-TO-TOP-OF-FRAME HEIGHT



GROUND-TO-TOP-OF-FRAME HEIGHT



The nominal 9" and 10" rails on F-650 and F-750 Straight Frame trucks offer loading-dock-level heights for ease of use at warehouses and receiving locations – and high-strength-steel alloy ratings ideal for heavy construction, utility work, wrecker duty and beyond. Straight Frame trucks are available in Regular Cab, SuperCab and Crew Cab, all with a low-profile cabin for plenty of versatility when lower clearance is needed. Plus, electronic stability control¹ is available on all Straight Frame trucks.

GVWRs: 26,000–33,000 lbs.² (Gas) / 26,000–37,000 lbs.² (Diesel)
 GCWRs: 37,000 lbs. (Gas) / 50,000 lbs. (Diesel)
 Rear axle ratings up to 26,000 lbs.²



¹. Remember that even advanced technology cannot overcome the laws of physics. It's always possible to lose control of a vehicle due to inappropriate driver input for the conditions. ². Weight restrictions vary by model.

F-650/F-750

TRACTOR

DIESEL



Get ready to redefine tractor pull. For vocational applications like beverage delivery and moving and storage, Built Ford Tough® F-650 and F-750 tractors are made to haul your toughest loads. The standard 6.7L Power Stroke® V8 Turbo Diesel pulls its own weight – and a whole lot more – with a torque rating up to 750 lb.-ft. An available rear air suspension helps smooth out the rough spots. With available in-factory 5th-wheel frame-rail drilling, your tractor is ready to support plates and other mounting equipment for fixed 5th wheels. And standard air brakes with traction control help you bring it all to a smooth, confident halt. Tractors are available in your choice of Regular Cab, SuperCab™ and Crew Cab.

GVWRs: 27,500 – 37,000 lbs.¹
GCWR: 50,000 lbs.
Rear axle ratings up to 26,000 lbs.¹

READY AND STABLE

The standard air brake system on F-650 and F-750 tractors includes electronic stability control² and traction control.² An available Driver Assist Technology Package for tractor models includes Pre-Collision Assist with Automatic Emergency Braking; Lane Departure Warning; Adaptive Cruise Control; and Auto High-Beam Headlamps.

A SOLID FOUNDATION

A high-strength, heat-treated alloy steel frame, long front leaf springs, double-acting front shock absorbers, and an available front stabilizer bar help F-650 and F-750 tractors deliver a smooth, comfortable ride while maintaining capability.

A CHOICE OF POWER

The standard 6.7L Power Stroke V8 Turbo Diesel engine delivers a max. 270 horsepower and 700 lb.-ft. of torque. Max. engine outputs of 300 hp and 725 lb.-ft. of torque, and 330 hp and 750 lb.-ft. of torque, are also available.

A VISIBLE DIFFERENCE

Enhance your rearward visibility with a choice of 96" – or available 102" – wide sideview mirrors to handle different trailers. Available power-adjustable mirrors include a heat feature that can warm the surface to help keep the mirrors clear in icy conditions.

F-750 DIESEL TRACTOR REGULAR CAB. Oxford White. Available and aftermarket upfit equipment.

¹ Weight restrictions vary by model. ² Remember that even advanced technology cannot overcome the laws of physics. It's always possible to lose control of a vehicle due to inappropriate driver input for the conditions.

Horsepower and torque are independent attributes and may not be achieved simultaneously. For additional information, see your Ford Dealer.

DEP
DEALER ePP

FORWARD THINKING.

The low cab height on all of our trucks makes for easy over-the-cab upfits. Available front fender-mounted aux mirrors offer the driver additional visibility along the right side or both sides of the truck for confident maneuvering. There's also an available air dryer alternate mount that can be used to move the air dryer outside of the frame rail for easier access, while opening space between the rails for bulky PTO accessory installations. Inside, an available supplemental cab heater provides additional warmth through the vehicle HVAC system when coolant temperatures are low. We begin with the end in mind – ease of upfitting – whatever your line of work.

AVAILABLE CUSTOM FRAME-RAIL DRILLING precisely positions frame holes, eliminating upfitter drilling into high-strength steel. In-factory drilling maintains Ford corrosion protection. Order yours during the normal truck-ordering process at your dealer.

AVAILABLE 2-SPEED REAR AXLE RATED AT 21,000 LBS. lets you engage an extra gear when needed for starting and pulling power from the axle's low range. It can also provide added functionality and maximum road speed from the axle's high range. F-750 Diesel only.

34" STANDARD FRAME WIDTHS define the chassis of every Ford F-650 and F-750. This measurement helps enable easy upfitting.

F-750 DIESEL CREW CAB. Race Red. Available equipment.

YOUR CHOICE OF 36 CAB AND CLEAN CA COMBINATIONS from 72" to 207." With 13 Regular Cab, 12 SuperCab™ and 11 Crew Cab CA options, our Built Ford Tough® medium-duty trucks are some of the most adaptable upfit vehicles on the road.

CONFIGURABLE DAYTIME RUNNING LAMPS allow you to choose to turn them on or off.

A CLEAN CA makes it easy to accommodate custom applications like tow truck, dump truck and ambulance bodies. To achieve ours, we placed the diesel exhaust fluid (DEF) tank and standard fuel tank under the cab, as opposed to farther back on the frame.

A. DIESEL ENGINE FUEL TANK choices begin with the aluminum fuel tank (50-gal. Regular Cab; 65-gal. SuperCab/Crew Cab) mounted under the driver's side of the cab for a clean CA. Extend your diesel range with the available 115-gal. dual rectangular aluminum fuel tanks (65-gal. on left/50-gal. on right). Diesel models also feature a standard 8-gal. DEF tank.

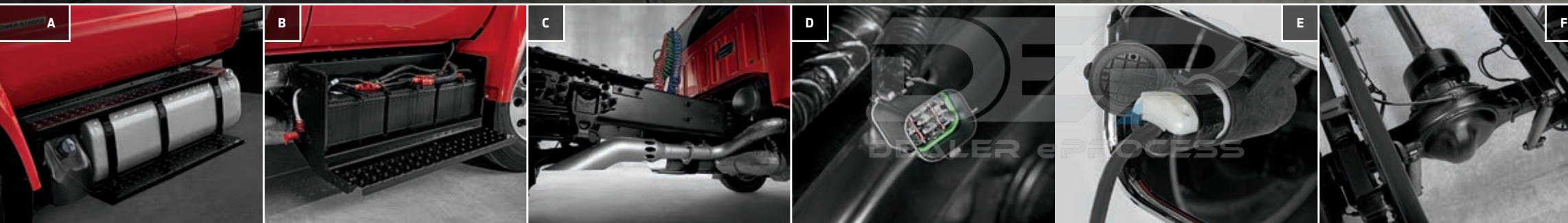
B. MOTORCRAFT® BATTERIES (shown with battery cover removed) run from 750 to 900 cold-cranking amps (CCA) depending on engine choice and model variations, with up to an available 2,700 total-vehicle CCA possible. Under-cab battery box placement (adjacent to the exhaust) contributes to a clean CA.

C. EXHAUST SYSTEMS vary from switchback to torpedo to an available undercab switchback style with vertical exit.

D. AVAILABLE BODY-BUILDER WIRING HARNESS to end-of-frame options designed to reduce the amount of wiring for upfitters to route.

E. AVAILABLE ENGINE BLOCK HEATER helps the engine achieve proper operating temperature faster by warming the coolant. This aids in quicker lubrication inside the engine, especially when the temperature drops.

F. A WIDE RANGE OF AXLE CAPACITIES gives you plenty of options to fit your particular type of work. F-650/F-750 front axle ratings range from 8,500 to an available 14,000 lbs. Rear axle ratings vary from 13,500 to an available 26,000 lbs.



8" COLOR LCD PRODUCTIVITY DISPLAY
This instrument cluster lets you choose your display screens and arrange them as you prefer. Unique screens for 6.7L Power Stroke® V8-equipped models include digital turbo and DEF gauges.

BLUETOOTH RADIO¹
For hands-free phone connectivity.

USB OUTLETS
Putting useful power right where you need it to recharge a range of devices.

USB RADIO INPUT
Stream from your phone to the truck's audio system.

AIR BRAKES
The controls and pressure gauge are right where you need them. Standard with diesel power.

UPFITTER SWITCHES
Easy power access and upfit installation. Operate high-power relays for heavy-duty accessories. Pre-wired and ready to go. Standard with diesel. Available with gas.

110V/150W AC POWER OUTLET²
Recharge tools with this available power outlet.²

DRIVER ASSIST TECHNOLOGY PACKAGE

From stockyard to highway to worksite, available driver-assist features³ on the 2022 Ford F-650/F-750 medium-duty trucks are engineered to help improve driver confidence and fleet performance, plus help you protect your investment in the field. Your hydraulic or air brake-equipped trucks can be outfitted with an available Driver Assist Technology Package to add this important level of equipment to your fleet of vehicles.

- **AUTO HIGH-BEAM HEADLAMPS**
- **ADAPTIVE CRUISE CONTROL⁴**
- **LANE DEPARTURE WARNING**
- **PRE-COLLISION ASSIST WITH AUTOMATIC EMERGENCY BRAKING**

Restrictions may apply. See Specifications pages and your dealer for details.

1. Don't drive while distracted. Use voice-operated systems when possible; don't use handheld devices while driving. **2.** Restrictions apply. See your dealer for details. **3.** Driver-assist features are supplemental and do not replace the driver's attention, judgment and need to control the vehicle. It does not replace safe driving. See owner's manual for details and limitations. **4.** Air brake system only.

EMPOWERED FOR YOU AND THE CREW.

Thanks to a clear, concise instrument panel and center stack, plus a standard tilt/telescoping steering column, you'll feel at ease behind the wheel of F-650 and F-750 medium-duty trucks. The comfortable standard driver seat complements a natural driving position. And with an available air-ride seat, the driver can find the optimal fit using the adjustable lumbar support and seat cushion positions (manual fore/aft and recline adjustment). A touch of a button and the sound of your voice is all it takes to make and take calls with our standard Bluetooth® voice-activated radio technology and a compatible mobile phone.¹ It can also play music from a compatible device. Plus, you'll find a 12V powerpoint, an available 110V/150W AC power outlet² for recharging your tools, and USB/USB-C ports for recharging other devices. All in a comfortable cabin that's surprisingly quiet.

DEALER ePROCESS

STANDARD FEATURES

MECHANICAL

Gas Engine Models

7.3L PFI V8 engine

12V Denso® starting motor

Air cleaner with heavy-duty filter

Alternator – 210-amp, extra-heavy-duty, 12V, Mitsubishi,® brushless, pad-mounted

Battery – 900-amp (CCA), 12V, Motorcraft®

Exhaust – Single, horizontal, catalytic converter, frame-mounted right side back of cab; downward-facing outlet tip

Neutral idle

Diesel Engine Models

6.7L Power Stroke® V8 Turbo Diesel engine (3 hp/torque rating options: 270/700 [99C], 300/725 [99E], and 330/750 [99X])

12V Comstar® starting motor

8-gal. diesel exhaust fluid (DEF) tank

Alternator – 200-amp, extra-heavy-duty, 12V, Denso, brushless, pad-mounted

Batteries – 750-amp (CCA), 12V, Motorcraft (2 for a total of 1,500 CCA)

Brakes – Air brake system with 4-wheel, 4-channel Anti-Lock Brake System (ABS), traction control, and hand control valve for trailer brake (Tractor)

Donaldson® single-element air cleaner with restriction indicator

Engine exhaust brake

Exhaust – Single, switchback-style, horizontal; frame-mounted right rail under cab with outside-of-frame-rail rear exit

Fuel/water separator

Manual regeneration initiation (driver interface in productivity screen)

Gas & Diesel Engine Models

Ford TorqShift® HD 6-speed automatic transmission (without PTO provision)

Battery box – Right-hand frame-mounted under cab step

BorgWarner viscous fan clutch

Brakes – Bosch® Hydro-Max® hydraulic brake system with 4-wheel, 4-channel Anti-Lock Brake System (ABS), and traction control (n/a on Tractor)

Driveshaft – Dana base

Engine coolant with extended-life Phosphate Organic Acid Technology (POAT), and –40°F freeze-protection rating

Fleet telematics modem – Full function to support vehicle tracking systems

Front suspension with parabolic-taper leaf springs and double-acting shock absorbers

Gear shift interlock key¹

Radiator – Aluminum with in-tank transmission cooler

Rear suspension with multi-leaf rear springs

SAE blade-type fuses

Wheel seals (front and rear axle), oil-lubricated wheel bearings (front and rear)

FUEL TANKS

Gas

50-gal. single rectangular steel (Regular Cab and SuperCab™)

60-gal. single rectangular steel (Crew Cab)

Diesel

50-gal. single rectangular aluminum (Regular Cab)

65-gal. single rectangular aluminum (SuperCab and Crew Cab)

INTERIOR CAB EQUIPMENT

Air conditioning

AM/FM radio with Bluetooth® capability, clock and 2 speakers

One (1) 12V powerpoint and one (1) dual USB/USB-C charger port

Air registers with positive shut-off

Assist handles – A-pillars on all cabs, and B-pillars on Crew Cab

Cruise control with steering wheel-mounted controls

Door-sill scuff plates – Black molded-in-color

Flooring – Black vinyl

Gauge cluster with electronic speedometer (mph/kph), tachometer, indicator lights and 8" LCD productivity screen

Glove box in right-hand instrument panel

Intelligent Oil-Life Monitor®

Left-/right-hand front-window demisters

Manual tilt/telescoping steering column

Molded cloth headliner

Multifunction, non-canceling turn signal switch (Tractor)

Multifunction, self-canceling turn signal switch (n/a on Tractor)

Rear-mounted dome lamp with integral map lights (Regular Cab and Crew Cab)

Steering wheel – Black vinyl

Upfitter switches (4) located in center IP with connector access located in engine compartment; includes 10-, 15-, and two 25-amp switches (diesel)

EXTERIOR CAB EQUIPMENT

Air/electric lines (12' coiled; Tractor)

Assist handles – B-pillars on all cabs, and C-pillars on Crew Cab¹

Automatic headlamps

Body-builder wiring harness, back of cab at frame (n/a on Tractor)

Bumper – Front; full-width, black-painted steel

Configurable daytime running lamps

Dual-note electric horn

Grille – Black-painted composite

Headlamps – Aero-type halogen with front side marker lamps and reflectors

Hood – Frame-mounted, front-end-tilting fiberglass hood and fenders assembly with torsion-bar assist (includes integrated noise shield, inner splash shields and mud flaps)

Lamps – Roof marker/clearance, amber lenses (5)

Mirrors – Black, dual rectangular, manually adjustable/folding with integrated spotter mirrors, sail-type, 96"-wide spacing

Pogo stick trailer air lines and electrical harness manager (Tractor)

Side repeat flashers

Square-cut frame ends (Pro Loader® and Straight Frame)

Taillamps with integrated stop, turn signal, backup and license plate bracket

Tapered frame ends (Tractor)

Tow hooks (2) – Front, black, frame-mounted

Trailer charge valve (Tractor)

Trailer module – 7-pin, mounted at back of cab (Tractor)

Window – Rear, fixed, solar-tinted

Windshield – Solar-tinted with laminated glass

Windshield wipers – 2-speed intermittent with washers

SAFETY & SECURITY

Belt-Minder® safety belt reminder (chime and flashing warning light on instrument panel if driver's safety belt isn't buckled)

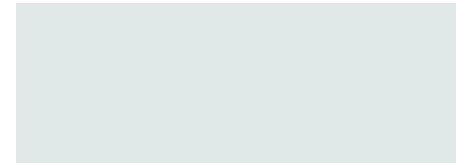
Electronic stability control¹ (Tractor)

Emergency flashers – 4-way

Safety belts – Color-keyed with fixed D-rings on outboard seating positions (Regular Cab)²

Safety belts – Color-keyed with adjustable D-rings on front-outboard seating positions (SuperCab and Crew Cab)²

EXTERIOR



Oxford White



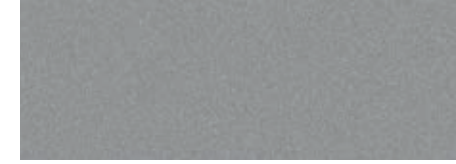
Bold Yellow



Tangier Orange



Blue Jeans Metallic



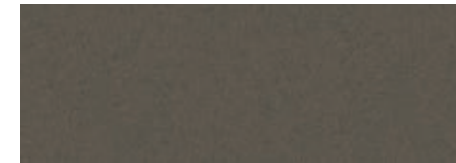
Ingot Silver Metallic



School Bus Yellow



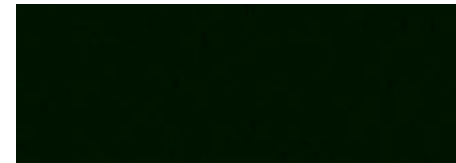
Race Red



Stone Gray Metallic



Magnetic Metallic

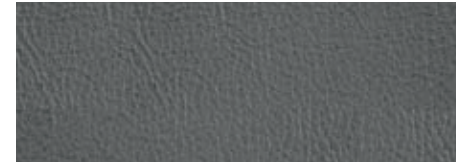


Green Gem Metallic



Agate Black Metallic

INTERIOR



Steel Gray HD Vinyl Standard



Steel Gray Cloth Available



Colors are representative only. See your dealer for actual paint/trim options. **1.** Restrictions may apply. See your dealer for details. **2.** Always wear your safety belt.

AVAILABLE FEATURES

AXLE & SUSPENSION – FRONT

EmGard® SAE 50 synthetic lubricant

Front stabilizer bar

AXLE & SUSPENSION – REAR

Double-acting shock absorbers (included with rear air suspension)¹

EmGard 75W-90 synthetic lubricant

AIR SUSPENSION – REAR

Air suspension¹ – 12,000-lb., 19,000-lb. or 21,000-lb. capacity (F-650)

Air suspension¹ – 21,000-lb. or 23,000-lb. capacity (F-750)

Air suspension dump valve

Single or dual air suspension leveling valves for left/right ride height

BRAKES & BRAKE EQUIPMENT

Air brake chambers – Spring-style (relocated to rear of axle; n/a on Pro Loader®)

Air brake system with ABS and traction control, 4-channel

Air compressor – Bendix® Tu-Flo® 550 13.2-CFM (for stand-alone air source with hydraulic brakes; included with air brake systems; required with air suspension)¹

Air dryer – Bendix AD/IS® with heater mounted inboard on left frame rail back of cab

Air dryer – Bendix AD/IS with heater mounted outside left frame rail close to cab (Regular Cab)

Electronic stability control (ESC)^{1,2} for both hydraulic and air brake-equipped models

TRAILER CONNECTIONS

4-wheel trailer Air Brake Package (includes air lines to rear of frame, hand control valve and tractor protection valve; n/a on Tractor)¹

7-way socket – Mounted at rear of frame, for combined trailer stop/tail/turn/marker lamp circuits (n/a on Tractor)¹

7-way socket – Mounted at rear of frame, for separate trailer stop/tail/turn/marker lamp circuits (n/a on Tractor)¹

7-way socket – Mounted at rear of frame, wired for turn signals combined with stop (compatible with trailers that use combined stop/tail/turn lamps; diesel only; n/a on Tractor)¹

7-way socket – Mounted at rear of frame, wired for turn signals separate from stop (compatible with trailers that have amber or side turn lamps with independent stop/turn; n/a on Tractor)¹

FUEL TANKS

(FRAME-MOUNTED ON LEFT SIDE)

Gas

65-gal. single rectangular steel (Regular Cab and SuperCab™)

Diesel

55-gal. single rectangular aluminum (Regular Cab; n/a on Pro Loader)

65-gal. single rectangular aluminum (Regular Cab)

115-gal. dual rectangular aluminum

(65-gal. left-hand tank and 50-gal. right-hand tank; n/a on Tractor)

ENGINE EQUIPMENT

Active regeneration control (diesel)

Engine block heater

Engine idle shutdown timer with 5-, 10-, 15- and 20-minute options

Top road speed limiter (65- and 70-mph options)

DRIVELINE & CLUTCHES

Driveshaft upgrade (diesel)

Transmission – Mobile and stationary mode power takeoff (PTO) provision

EXHAUST (DIESEL)

Single, switchback-style, horizontal; frame-mounted outside right rail under cab with vertical exit

Single, torpedo-style, horizontal; frame-mounted right side back of cab with underbody exit in front of axle¹

ELECTRICAL

Body-builder wiring to end of frame (n/a on Tractor)

Daytime running lamps (non-configurable)¹

Electric, 102-decibel backup alarm¹

Remote-mounted jump-start stud¹

Taillamps delete (does not omit cable to end of frame; n/a on Tractor)

ALTERNATORS

Extra-heavy-duty, 240-amp, 12V Denso®¹

Dual heavy-duty, 397-amp total, 12V Denso¹ (gas)

Dual heavy-duty, 357-amp total, 12V Denso (diesel)

BATTERIES

900 CCA, 12V Motorcraft® (2 for a total of 1,800 CCA)

900 CCA, 12V Motorcraft (3 for a total of 2,700 CCA; diesel)

Temporary mount at back of cab (dual 900 CCA or triple 900 CCA only, includes 10' of additional cable; diesel; n/a on Tractor)

INTERIOR CAB EQUIPMENT

110V/150W AC power outlet¹

Air conditioning delete; fresh air heater and defroster only¹

Keyed-alike fleet order options¹

Rapid-heat supplemental cab heater (diesel; standard in cold weather states)¹

Rearview mirror

Remote Keyless Entry System with 2 key fobs¹

SecuriLock® Passive Anti-Theft System¹

Upfitter Interface Module (UIM)

Upfitter switches (4) located in center IP with connector access located in engine compartment; includes 10-, 15-, and two 25-amp switches (gas)

Voltmeter (located in productivity screen)

EXTERIOR CAB EQUIPMENT

Air horn, single-trumpet, mounted on back bumper frame rail (diesel)

Special-rating GVWR (limited to 25,999 lbs.; Straight Frame)

Special-rating GVWR (limited to 33,000 lbs.; F-750 Straight Frame diesel only)

Tow hooks delete

Window – Rear, sliding

FRONT BUMPER

3" extension¹ (n/a with swept-back bumper)

Bumper delete

Full-width, chrome-plated steel (included with Exterior Appearance Package)

Swept-back, Dark Shadow Gray-painted steel¹

FRAME

5th-wheel frame-rail drilling (Tractor)

Frame-rail drilling to support aftermarket installation of 4x4 conversion¹

Frame-rail drilling to support special fuel tanks for Roush® CNG/propane gaseous engine prep conversion (Straight Frame gas)

Frame reinforcement (F-750 only; n/a on Tractor)¹

Integral front frame extension – 20" in front of grille¹

GRILLE

Fixed, black-painted composite

LAMPS

Roof marker/clearance, clear lenses (5)

Roof marker/clearance delete (n/a on Tractor)

MIRRORS

Black, dual rectangular, manually adjustable/folding and heated with integrated spotter mirrors, sail-type, 96"-wide spacing

Black, dual rectangular, power-adjustable/manually folding and heated with integrated spotter mirrors, sail-type, 96"-wide spacing¹

Chrome caps, dual rectangular, manually adjustable/folding with integrated spotter mirrors, sail-type, 96"-wide spacing

Chrome caps, dual rectangular, manually adjustable/folding and heated with integrated spotter mirrors, sail-type, 96"-wide spacing

Chrome caps, dual rectangular, power-adjustable/manually folding and heated with integrated spotter mirrors, sail-type, 96"-wide spacing¹

Black, dual rectangular, manually adjustable/folding with integrated spotter mirrors, sail-type, 102"-wide spacing

Black, dual rectangular, manually adjustable/folding and heated with integrated spotter mirrors, sail-type, 102"-wide spacing¹

Black, dual rectangular, power-adjustable/manually folding and heated with integrated spotter mirrors, sail-type, 102"-wide spacing¹

Chrome caps, dual rectangular, manually adjustable/folding with integrated spotter mirrors, sail-type, 102"-wide spacing

Chrome caps, dual rectangular, manually adjustable/folding and heated with integrated spotter mirrors, sail-type, 102"-wide spacing¹

Chrome caps, dual rectangular, power-adjustable/manually folding and heated with integrated spotter mirrors, sail-type, 102"-wide spacing¹

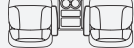
Front fender-mounted auxiliary spot mirrors – Driver and passenger side

Front fender-mounted auxiliary spot mirror – Passenger side only

PowerScope® power-telescoping/-folding trailer tow mirrors with power-adjustable/heated glass, manual convex integrated spotter mirrors, integrated clearance lamps and turn signal indicators, 96"-wide spacing¹

SEATING

STANDARD FRONT



High-back bucket seats with integrated head restraints, manual fore/aft and recline adjustment, inboard armrests, driver's side manual lumbar, and floor-mounted mini-console



OPTIONAL FRONT

High-back bucket seats with integrated head restraints, manual fore/aft and recline adjustment, inboard armrests, driver's side manual lumbar, and floor-mounted mini-console



High-back bucket driver's seat and 2-passenger bench seat with integrated head restraints, manual fore/aft and recline adjustment, driver's side manual lumbar, and fold-down armrest with tray and cupholders



High-back bucket driver's seat with integrated head restraint, manual fore/aft and recline adjustment, inboard armrest, and manual lumbar



40/20/40 split bench seat with adjustable head restraints, manual fore/aft and recline adjustment, driver's side manual lumbar, and fold-down armrest with storage tray and cupholders

STANDARD REAR

60/40 split bench with fold-up high-density foam seat; converts to load floor (SuperCab)

60/40 split bench with fold-up high-density foam seat and fold-down seat back (Crew Cab)

OPTIONAL REAR

Rear-seat delete (SuperCab and Crew Cab)

Air-ride seats are available on Regular Cab and Crew Cab models, with or without air brakes. On models equipped with the standard hydraulic brake system, air-ride seats with an integral or external air pump are optional.

MUD FLAPS

Mud flaps – Rear¹

Mud flap holders – Rear, without flaps

PACKAGES

Ambulance Prep Package: special EPA calibration for emergency vehicles, 357-amp dual heavy-duty alternators, and three 900 CCA batteries for 2,700 CCA total (diesel; n/a on Tractor)

Audio Delete Package: deletes radio and all associated parts

Audio Prep Package: deletes radio, but retains all associated parts

Beverage Delivery Package:¹ body-builder wiring with 6' additional length to accommodate drop-frame beverage body application

CNG/Propane Gaseous Engine Prep Package: hardened intake valves and valve seats (gas)

Driver Assist Technology (DAT) Package¹ – Air Brakes: Pre-Collision Assist with Automatic Emergency Braking; Lane Departure Warning; Adaptive Cruise Control; and Auto High-Beam Headlamps

Driver Assist Technology (DAT) Package¹ – Hydraulic Brakes: Pre-Collision Assist with Automatic Emergency Braking; Lane Departure Warning; and Auto High-Beam Headlamps

Exterior Appearance Package: full-width, chrome-plated steel front bumper; chrome grille; and chromed fender badges

Fire/Rescue Prep Package: special EPA calibration for emergency vehicles, 357-amp dual heavy-duty alternators, and three 900 CCA batteries for 2,700 CCA total (diesel; n/a on Tractor)

Interior Appearance Package: front-mounted overhead console with dual sunglasses holders and front map lights, door-trim panels, map pockets, chrome air registers, 2nd-row bench seat (Crew Cab), 2nd-row flip-up seats with cushions and bolsters (SuperCab), perforated cab back panel (Regular Cab and Crew Cab), and Power Equipment Package

Power Equipment Package: power front side windows, power rear side windows (Crew Cab), power door locks, and door-trim panels (included in Interior Appearance Package)

SEAT SUSPENSIONS

DRIVER PASSENGER

Fixed Fixed

Air-ride Fixed

Air-ride Air-ride

Fixed Fixed

Air-ride Fixed

Fixed Air-ride

Fixed Fixed

1. Restrictions may apply. See your dealer for details. **2.** Ordered units only; requires special build requirement for the final body upfit center of gravity height.



FRAMES S: Standard O: Optional

FRAME ORDER CODE	533	534	535	536	537	538 ¹	539	536 + 41R
AVAILABILITY								
Pro Loader® - F-650 Gas & Diesel	—	—	—	—	S	—	—	—
Straight Frame - F-650 Gas & Diesel	O	S	O	O	—	O	—	—
Straight Frame - F-750 Gas & Diesel	—	—	S	O	—	O	O	O
Tractor - F-650/F-750 Diesel	—	—	—	S	—	—	—	—
SPECIFICATIONS								
Depth (in.)	9.126	10.126	10.252	10.126	9.126	10.250	10.378	10.866
Width (in.)	3.066	3.063	3.091	3.579	3.063	3.610	3.701	3.894
Thickness (in.)	0.312	0.312	0.375	0.312	0.312	0.375	0.438	0.624
Yield (psi)	80,000	50,000	80,000	120,000	80,000	120,000	120,000	120,000
Maximum section modulus (cu. in.)	10.75	12.64	15.14	14.18	10.75	16.98	20.11	29.20
Maximum resisting bending moment (in.-lbs.)	859,200	632,000	1,211,200	1,701,600	860,000	2,038,000	2,413,200	3,504,000

WHEELS



DIMENSIONS (in.)

	Regular Cab	SuperCab™	Crew Cab
Overall height (at curb) ⁴	90.2 - 94.4	90.4 - 94.7	90.9 - 95.1
Width at front fenders	95.5	95.5	95.5
Frame rail width	34.0	34.0	34.0
Front bumper to back of cab	114.4	135.4	149.9
Load floor height (at curb)	33.6 - 38.5	33.6 - 38.5	33.6 - 38.5
Front bumper to center of front axle	40.4	40.4	40.4
Wheelbase	146.0 - 281.0	167.0 - 281.0	182.0 - 278.0
Center of rear axle to end of frame	39.0 - 120.0	39.0 - 120.0	39.0 - 100.0
Back of cab to center of front axle	74.0	95.0	109.5
Back of cab to center of rear axle	72.0 - 207.0	72.0 - 207.0	72.0 - 168.0

WHEELBASE / CAB-TO-AXLE OPTIONS (in.)

	PRO LOADER F-650 Gas & Diesel	STRAIGHT FRAME F-650 Gas & Diesel	F-750 Gas & Diesel	TRACTOR F-650/F-750 Diesel
Regular Cab	158/84	158/84	158/84	146/72
	182/108	176/102	176/102	158/84
	194/120	182/108	182/108	
	218/144	194/120	194/120	
	242/168	200/126	200/126	
		212/138	212/138	
		218/144	218/144	
		224/150	224/150	
		230/156	230/156	
		242/168	242/168	
SuperCab	179/84	179/84	179/84	167/72
	203/108	197/102	197/102	179/84
	239/144	203/108	203/108	
		215/120	215/120	
		221/126	221/126	
		233/138	233/138	
		239/144	239/144	
		245/150	245/150	
		251/156	251/156	
		263/168	263/168	
Crew Cab	194/84	182/72	182/72	182/72
	218/108	194/84	194/84	
	254/144	212/102	212/102	
		218/108	218/108	
		230/120	230/120	
		236/126	236/126	
		248/136	248/136	
		254/144	254/144	
		260/150	260/150	
		266/156	266/156	
	278/168			

WHEELS & TIRES S: Standard O: Optional

	PRO LOADER F-650		STRAIGHT FRAME F-650		F-750		TRACTOR F-650	
	Gas	Diesel	Gas	Diesel	Gas	Diesel	Diesel	Diesel
WHEELS (in.)								
19.5 x 6.75 8-lug white powder-coated steel	S	S	O	O	—	—	—	—
19.5 x 6.75 Alcoa® aluminum 8-lug Clean Buff w/Dura-Bright® seal on both sides ²	O	O	O	O	—	—	—	—
19.5 x 7.5 10-lug white powder-coated steel	O	O	O	O	—	—	—	—
19.5 x 7.5 Alcoa aluminum 10-lug polished w/Dura-Bright seal on both sides ²	O	O	O	O	—	—	—	—
22.5 x 8.25 10-lug white powder-coated steel	—	—	S	S	S	S	S	S
22.5 x 8.25 Alcoa aluminum 10-lug bright polished w/Dura-Bright seal on both sides ²	—	—	O	O	O	O	O	O
22.5 x 8.25 10-lug black	—	—	O	O	O	O	O	O
TIRES³								
245/70R19.5G	S	S	O	O	—	—	—	—
245/70R19.5H	O	O	O	O	—	—	—	—
265/70R19.5G	O	O	O	O	—	—	—	—
11R22.5G	—	—	S	S	S	S	S	S
11R22.5H	—	—	O	O	O	O	O	O
255/70R22.5H	—	—	O	O	O	O	O	O
275/80R22.5G	—	—	O	O	O	O	O	O
275/80R22.5H	—	—	O	O	O	O	O	O
295/75R22.5H	—	—	O	O	O	O	O	O
295/80R22.5H	—	—	—	—	O	O	—	O

WEIGHT RATINGS (lbs.) S: Standard O: Optional

	PRO LOADER F-650		STRAIGHT FRAME F-650		F-750		TRACTOR F-650	
	Gas	Diesel	Gas	Diesel	Gas	Diesel	Diesel	Diesel
AXLES								
Front axle rating	8,500 (S)	8,500 (S)	8,500 (S)	8,500 (S)	10,000 (S)	10,000 (S)	10,000 (S)	10,000 (S)
			10,000 (O)	10,000 (O)	12,000 (O)	12,000 (O)		12,000 (O)
						14,000 (O)		14,000 (O)
Rear axle rating - Single-speed	13,500 (S)	13,500 (S)	17,500 (S)	17,500 (S)	21,000 (S)	21,000 (S)	17,500 (S)	21,000 (S)
	17,500 (O)	17,500 (O)	19,000 (O)	19,000 (O)		23,000 (O)	19,000 (O)	23,000 (O)
						26,000 (O)		26,000 (O)
Rear axle rating - 2-speed						21,000 (O)		21,000 (O)
SUSPENSIONS								
Front spring rating	8,500 (S)	8,500 (S)	8,500 (S)	8,500 (S)	10,000 (S)	10,000 (S)	10,000 (S)	10,000 (S)
	10,000 (O)	10,000 (O)	10,000 (O)	10,000 (O)	12,000 (O)	12,000 (O)	12,000 (O)	12,000 (O)
					13,200 (O)	13,200 (O)		13,200 (O)
						14,000 (O)		14,000 (O)
Rear multi-leaf spring rating	15,500 (S)	15,500 (S)	19,000 (S)	19,000 (S)	21,000 (S)	21,000 (S)	19,000 (S)	21,000 (S)
	19,000 (O)	19,000 (O)	21,000 (O)	21,000 (O)	23,000 (O)	23,000 (O)	21,000 (O)	23,000 (O)
						31,000 (O)		31,000 (O)
Rear air-suspension rating		12,000 (O)		19,000 (O)		21,000 (O)	19,000 (O)	21,000 (O)
		19,000 (O)		21,000 (O)		23,000 (O)	21,000 (O)	23,000 (O)
GVWR RANGE								
Minimum	22,000	22,000	26,000	26,000	31,000	31,000	27,500	31,000
Maximum	26,000	26,000	29,000	29,000	33,000	37,000	29,000	37,000
GCWR	37,000	50,000	37,000	50,000	37,000	50,000	50,000	50,000
CURB WEIGHT RANGE (with standard brakes)								
Minimum	8,748	9,407	8,912	9,669	9,239	10,040	10,067	10,187
Maximum	9,527	10,186	10,419	11,173	10,743	11,592	10,862	10,982

1. Restrictions may apply. See your dealer for details. 2. Two options are available: aluminum outer/steel inner, or aluminum inner/aluminum outer. 3. Due to industry-wide tire availability shortages, tire substitutions may be required at time of vehicle production. 4. Height measurements may vary with tire.



A-PILLAR GRAB HANDLE ASSISTS WITH INGRESS AND EGRESS
Standard



CAB STEPS AND GRAB HANDLES HELP DRIVERS ENTER AND EXIT SECURELY
Standard

DUAL MANUAL-FOLDING, HEATED, SAIL-TYPE MIRRORS INCLUDE INTEGRATED SPOTTER MIRRORS AND CAN REACH UP TO 102" WIDE
Available

Ford and Oval Device, Belt-Minder, Built Ford Tough, Ford Credit, Ford Data Services, Ford Protect, Ford Telematics, Intelligent Oil-Life Monitor, Motorcraft, Power Stroke, PowerScope, Pro Loader, SecuriLock, Super Duty, SuperCab, TorqShift and related marks are trademarks of Ford Motor Company.

Absopure is a trademark of Absopure Direct LLC. App Store is a service mark of Apple Inc. BENDIX is a registered trademark of Knorr-Bremse used under license by Bendix Commercial Vehicle Systems LLC. Tu-Flo® and AD/IS® are registered trademarks of Bendix Commercial Vehicle Systems LLC. Bosch and Hydro-Max are registered trademarks of Robert Bosch GmbH. Comstar is a registered trademark of COMSTAR Automotive Technologies Pvt Ltd. Denso is a registered trademark of Denso International America, Inc. Donaldson is a registered trademark of Donaldson Company, Inc. EmGard is a registered trademark of Cognis IP Management GmbH. Google, Android and Google Play are trademarks of Google LLC. Requires the Android Auto app on Google Play and an Android compatible smartphone running Android™ 5.0 or higher. Huckbolt is a trademark of Howmet Aerospace Inc. and/or its subsidiaries. Mitsubishi is a registered trademark of the Mitsubishi Corporation. Roush is a registered trademark of Roush Enterprises Inc. The Bluetooth word mark is a trademark of the Bluetooth SIG, Inc. WEX is a registered trademark of WEX, Inc.

Comparisons based on competitive models (Class 6-7 Conventional Chassis Cabs), publicly available information and Ford certification data at time of release. Vehicles may be shown with optional and aftermarket upfit equipment. Features may be offered only in combination with other options or subject to additional ordering requirements/limitations. Dimensions and capacity ratings shown may vary due to optional features and/or production variability. Information is provided on an "as is" basis and could include technical, typographical or other errors. Ford makes no warranties, representations, or guarantees of any kind, express or implied, including but not limited to, accuracy, currency, or completeness, the operation of the information, materials, content, availability, and products. Ford reserves the right to change product specifications, pricing and equipment at any time without incurring obligations. Your Ford Dealer is the best source of the most up-to-date information on Ford vehicles. Body manufacturers are responsible for compliance certification of the completed vehicle. The Ford New Vehicle Limited Warranty and any government certification made by Ford shall cover only the vehicle as manufactured by Ford and shall not extend to any addition, modification or change of or to the vehicle by the Ford Authorized Pool Account.



FORD COMMERCIAL SOLUTIONS



MANAGE YOUR FLEET. FORD TELEMATICS.

Get help optimizing your fleet with Ford Commercial Solutions. The available **FORD TELEMATICS™**¹ web-based application can help you effortlessly monitor your vehicles to understand where they go, how they're used, and how well they're running. Drivers can use the **FORD TELEMATICS DRIVE** mobile app² to perform vehicle roadworthiness checks and report vehicle issues. You'll be able to review this information, as well as data generated by the vehicle itself, all within Ford Telematics, empowering you to take action as needed. You can also use available **FORD DATA SERVICES™** to access Ford generated vehicle data with authorized telematics service providers. Get the data you need, the way you prefer.

Now you can even get help controlling fueling expenses with available **WEX FUEL CARDS** powered by WEX®. Easy-to-use tools and available fuel rebates are designed to help you keep expenses under control and keep more money in your business – where it belongs.



GPS tracking and geofencing capabilities can help you keep track of the vehicles in your fleet.



Vehicle fuel usage monitoring can help you identify areas of waste and their causes.



Driver behavior insights identify opportunities for you to reduce waste and improve compliance.



Proactive notifications and vehicle health alerts help you schedule services in advance.

Learn more about these valuable tools at COMMERCIALSOLUTIONS.FORD.COM

Ford Credit®

Get the ride you want. Whether you plan to lease or buy, Ford Credit has the option that's right for you. Ask your Ford Dealer for details or visit us online at ford.com/finance.

Ford Protect™ Extended Service Plans.

Whether you purchase or lease your Ford vehicle, insist on genuine Ford Protect extended service plans. Ford Protect has a variety of plans to give you peace-of-mind protection whether you want vehicle component or maintenance coverage. Plus, they are fully backed by Ford and honored at all Ford dealerships in the U.S., Canada and Mexico. When you visit your dealer, insist on genuine Ford Protect extended service plans.

¹. Available on vehicles with embedded modem or equipped with plug-in device (PID). Requires modem activation. Ford Telematics and Ford Data Services are subscription services subject to agreement to FSM terms and conditions. Subscription subject to monthly charge. Subject to OFAC and credit check for subscription eligibility. Connected service and features, and access to vehicle data depend on subscription and compatible AT&T network availability. Evolving technology/cellular networks/vehicle capability may limit functionality and prevent operation of connected features. ². Ford Telematics Drive app, compatible with select smartphone platforms, is available via download. Message and data rates may apply. Evolving technology/cellular networks may limit functionality and use of app.



ford.com/commercial-trucks/f650-f750

DEALER SP



From day one, we had the future in mind. And over 117 years later, we continue that tradition of innovation with Ford Co-Pilot360™ helping push us closer to autonomous driving, the latest generation of SYNC® to communicate untethered and our first fully electric vehicle – Ford Mustang Mach-E®

We've always had our mind on the future. Now we're building it.

22F67PDF

©2021 Ford Motor Company

BACKED BY OVER 500 FORD MEDIUM-DUTY SERVICE CENTERS.

PLUS, A NETWORK OF FORD COMMERCIAL VEHICLE CENTERS.



COMMERCIAL VEHICLES

There's a standard of excellence at your local Ford Commercial Vehicle Center dealer, where our certified experts are focused on offering an exceptional sales, service and finance experience. After helping you spec your vehicle, our knowledgeable staff will help ensure it's built to your requirements. We can also recommend finance solutions and help maximize your "up-time" after the sale with prompt, specialized service. You'll find extended hours and service discounts at our Service and Parts Departments, along with a Parts Advantage program that helps us keep the fastest-moving fleet parts in your area in stock. Learn more at www.fordcommercialvehiclecenter.com.

6.7L DIESEL POWERTRAIN LIMITED WARRANTY¹

5 Years/250,000 Miles (or 10,000 Engine Hrs., whichever comes first)

7.3L GAS POWERTRAIN LIMITED WARRANTY¹

5 Years/100,000 Miles (or 4,000 Engine Hrs., whichever comes first)

BODY CORROSION-PERFORATION LIMITED WARRANTY¹

36 Months/Unlimited Mileage

BASIC LIMITED WARRANTY¹

24 Months/Unlimited Mileage

ROADSIDE ASSISTANCE PROGRAM²

24 Months/Unlimited Mileage



1. See your Ford Dealer for details and a copy of all limited warranties. 2. Roadside assistance is included for certain owners and available to everyone for a per-service fee. Ford reserves the right to change program details without obligations.

DEALER ePROCESS